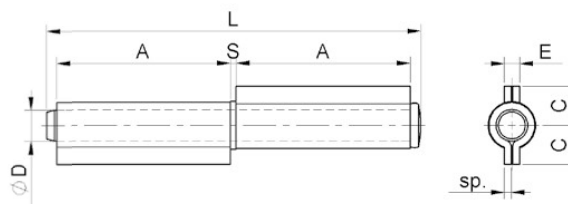


art. 100

Cerniera 2 ali perno e rondella sfilabile
Hinge to be welded with 2 wings
and extractable pin
петля разборная 2 части под сварку

Versione INOX/Stainless steel art.101IX pag. 186
Versione perno Ottone art.100OT

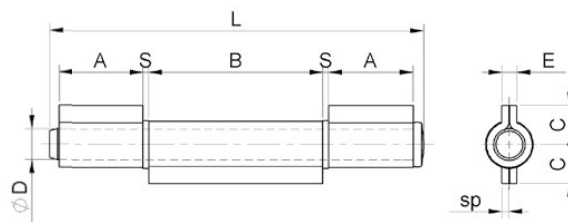


cod.	cod. zincato	mm.	pz/pcs	A	C	sp	ØD	E	L	S
100.60	100Z.60	60	48	27	8,5	2	Ø6	4,5	61	2
100.80	100Z.80	80	48	36	10	2	Ø8	4,5	80	2
100.100	100Z.100	100	24	46	11,5	2	Ø9	4,5	100	2
100.120	100Z.120	120	24	56	12	2,3	Ø10	5	121	2
100.140	100Z.140	140	24	66	13	2,5	Ø11	5,5	142	2
100P.140	100PZ.140	140P	12	66	15	2,7	Ø12	6	142	2,2
100P.170	100PZ.170	170P	12	81	15	2,7	Ø12	6	171	2,2
100P.200	100PZ.200	200P	12	96	17	3	Ø14	6,5	202	2,3

art. 105

Cerniera 3 ali perno e rondelle sfilabili
Hinge to be welded with
3 wings and extractable pin
петля разборная 3 части под сварку

Versione INOX/Stainless Steel art.106IX pag. 186
Versione perno Ottone art.105OT.

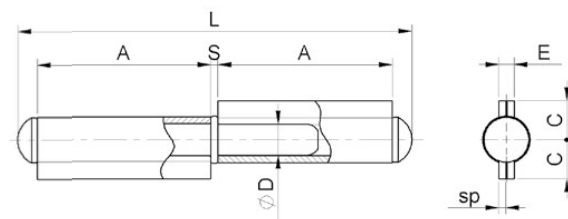


cod.	cod. zincato	mm.	pz/pcs	A	B	C	sp	ØD	E	L	S
105.80	105Z.80	80	48	17	36	10	2	Ø8	4,5	80	2
105.100	105Z.100	100	24	22	46	11,5	2	Ø9	4,5	100	2
105.120	105Z.120	120	24	27	56	12	2,3	Ø10	5	121	2
105.140	105Z.140	140	24	32	66	13	2,5	Ø11	5,5	142	2
105P.140	105PZ.140	140P	12	32	66	15	2,7	Ø12	6	142	2,2
105P.170	105PZ.170	170P	12	39	81	15	2,7	Ø12	6	171	2,2
105P.200	105PZ.200	200P	12	47	96	17	3	Ø14	6,5	202	2,3

art. 110 OT

Cerniera a tappo 2 ali, perno
con rondella fissa ottone
Plug hinge to be welded with
2 wings and fixed brass pin
петля неразборная 2 части
под сварку с латунной шайбой

(Ex art. 108)



cod.	mm.	pz/pcs	A	C	sp	ØD	E	L	S
110OT.140	140	12	66	13	2,5	Ø11	5,5	149	2,7
110OTP.140	140P	12	66	15	2,7	Ø12	6	150	2,7
110OTP.170	170P	12	81	15	2,7	Ø12	6	180	2,7