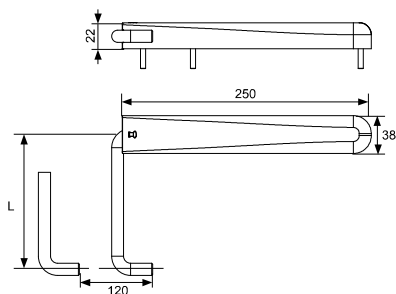
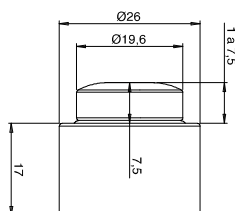


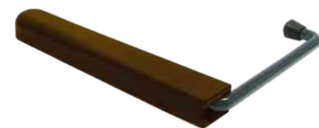
FERMAPERSIANA UNIVERSALE



+ Per una tenuta ottimale far lavorare la leva a fine corsa



RAL 9016



RAL 8014



RAL 6005



RAL 7004

9470L.. Fermapersiana Universale

Cod.		L	
9470I7	9005	135	12
9470I8	9005	180	12
9470I7C	9016	135	12
9470I8C	9016	180	12
9470I757	8014	135	12
9470I857	8014	180	12
9470I758	6005	135	12
9470I858	6005	180	12
9470I753	7004	135	12
9470I853	7004	180	12

94PAE1.. Battuta nylon ammortizzata

Cod.		
94PAE16	TRASP	20
94PAE1C	TRASP	20