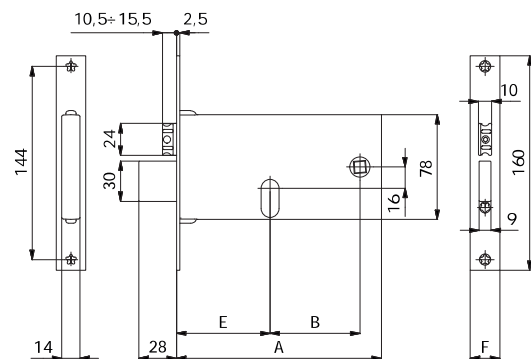


**SERRATURE PER FASCE**  
**HORIZONTAL LOCKS**



**CATENACCIO E SCROCCO REGOLABILE - DEAD AND ADJUSTABLE LATCH BOLT**  
**SCROCCO INTERCAMBIABILE CON RULLO COD.0535 - LATCH BOLT INTERCHANGEABLE WITH ROLLER BOLT COD.0535**



**CARATTERISTICHE COSTRUTTIVE:** Scatola e coperchio in acciaio zincato e plastificato - Frontale in acciaio inox - Catenaccio in acciaio nichelato - Scrocco anti-rumore in lega speciale nichelata - Ingegno maniglia in lega speciale zincata foro  $\varnothing$  8 mm.

**FUNZIONAMENTO:** Catenaccio comandato dalla chiave - Scrocco comandato dalla chiave o dalla maniglia.

**MANO:** Reversibile.

**PARTI IN DOTAZIONE:** Vite cilindro.

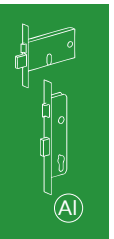
**CONSTRUCTIVE FEATURES:** Zinc and plastic plated steel case and cover - Stainless steel forend - Nickel-plated steel dead bolt - Nickel-plated special alloy anti-noise latch bolt - Zinc-plated special alloy square spindle device  $\varnothing$  8 mm.

**WORKING:** Key driven dead bolt - Handle or key driven latch bolt.

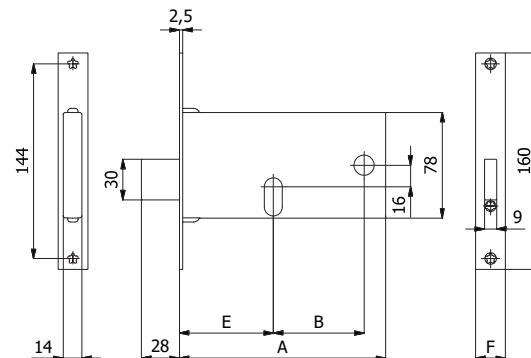
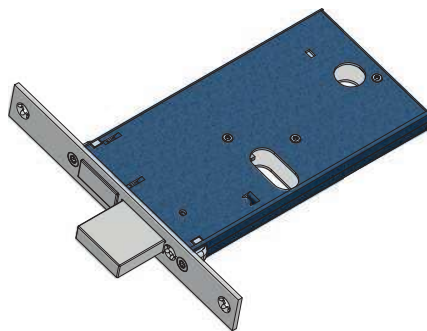
**HAND:** Reversible.

**PROVIDED WITH:** Cylinder screw.

COD.	E	F	A	B	mandate throws	kg		
370	60	16	133	47	3	0,51	1	10
370/F22	60	22	133	47	3	0,53	1	10
770	70	16	153	67	3	0,55	1	10
770/F22	70	22	153	67	3	0,57	1	10
770-TT/F15	70	14,6	153	67	3	0,56	1	10
870	80	16	163	67	3	0,62	1	10
870/F22	80	22	163	67	3	0,64	1	10
870-TT/F15	80	14,6	163	67	3	0,63	1	10



**CATENACCIO - DEAD BOLT**



**CARATTERISTICHE COSTRUTTIVE:** Scatola e coperchio in acciaio zincato e plastificato - Frontale in acciaio inox - Catenaccio in acciaio nichelato.

**FUNZIONAMENTO:** Catenaccio comandato dalla chiave.

**MANO:** Unica.

**PARTI IN DOTAZIONE:** Vite cilindro.

**CONSTRUCTIVE FEATURES:** Zinc and plastic plated steel case and cover - Stainless steel forend - Nickel-plated steel dead bolt.

**WORKING:** Key driven dead bolt.

**HAND:** No hand.

**PROVIDED WITH:** Cylinder screw.

COD.	E	F	A	B	mandate throws	kg		
371	60	16	133	47	3	0,38	1	10
371/F22	60	22	133	47	3	0,40	1	10
771	70	16	153	67	3	0,43	1	10
771/F22	70	22	153	67	3	0,45	1	10
871	80	16	163	67	3	0,50	1	10
871/F22	80	22	163	67	3	0,52	1	10