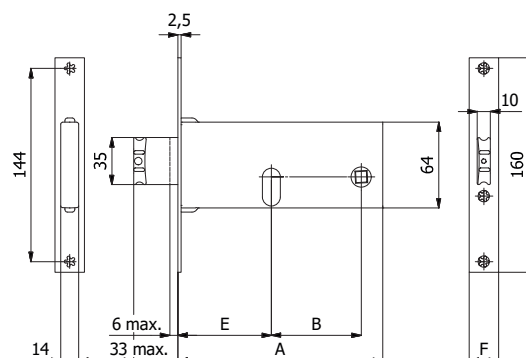
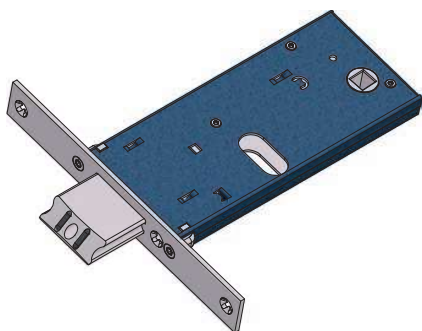


## SERRATURE PER FASCE HORIZONTAL LOCKS



### SCROCCO REGOLABILE CON MANDATE - ADJUSTABLE LATCH BOLT WITH THROWS

SCROCCO INTERCAMBIABILE CON RULLO COD. 0385 - LATCH BOLT INTERCHANGEABLE WITH ROLLER BOLT COD. 0385



**CARATTERISTICHE COSTRUTTIVE:** Scatola e coperchio in acciaio zincato e plastificato - Frontale in acciaio inox - Scrocco anti-rumore in lega speciale nichelata - Ingegno maniglia in lega speciale zincata foro  $\varnothing$  8 mm.

**FUNZIONAMENTO:** Mandate comandate dalla chiave - Scrocco comandato dalla chiave o dalla maniglia.

**MANO:** Reversibile.

**PARTI IN DOTAZIONE:** Vite cilindro.

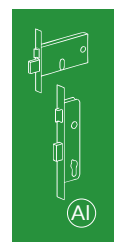
**CONSTRUCTIVE FEATURES:** Zinc and plastic plated steel case and cover - Stainless steel forend - Nickel-plated special alloy anti-noise latch bolt - Zinc-plated special alloy square spindle device  $\varnothing$  8 mm.

**WORKING:** Key driven throws - Handle or key driven latch bolt.

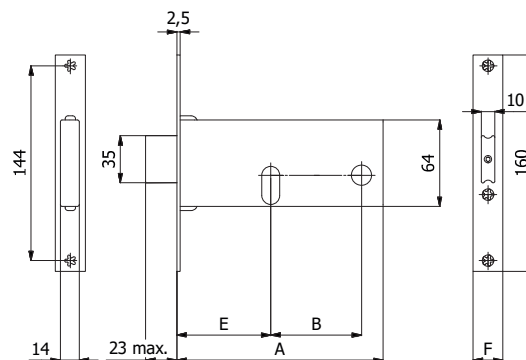
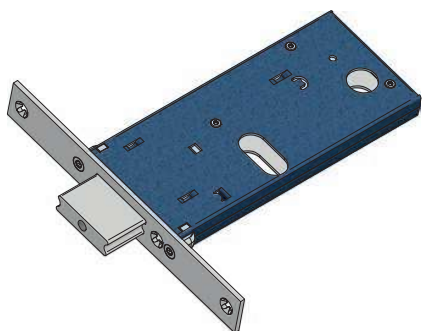
**HAND:** Reversible.

**PROVIDED WITH:** Cylinder screw.

COD.	E	F	A	B	mandate throws	kg		
380	60	16	133	47	2	0,44	1	10
380/F22	60	22	133	47	2	0,46	1	10
780	70	16	153	67	2	0,48	1	10
780/F22	70	22	153	67	2	0,50	1	10
780-TT/F15	70	14,6	153	67	2	0,48	1	10
880	80	16	163	67	2	0,51	1	10
880/F22	80	22	163	67	2	0,53	1	10
880-TT/F15	80	14,6	163	67	2	0,51	1	10



### CATENACCIO REGOLABILE - ADJUSTABLE DEAD BOLT



**CARATTERISTICHE COSTRUTTIVE:** Scatola e coperchio in acciaio zincato e plastificato - Frontale in acciaio inox - Catenaccio in lega speciale nichelata.

**FUNZIONAMENTO:** Catenaccio comandato dalla chiave.

**MANO:** Unica.

**PARTI IN DOTAZIONE:** Vite cilindro.

**CONSTRUCTIVE FEATURES:** Zinc and plastic plated steel case and cover - Stainless steel forend - Nickel-plated special alloy dead bolt.

**WORKING:** Key driven dead bolt.

**HAND:** No hand.

**PROVIDED WITH:** Cylinder screw.

COD.	E	F	A	B	mandate throws	kg		
381	60	16	133	47	2	0,40	1	10
381/F22	60	22	133	47	2	0,42	1	10
781	70	16	153	67	2	0,44	1	10
781/F22	70	22	153	67	2	0,46	1	10
881	80	16	163	67	2	0,48	1	10
881/F22	80	22	163	67	2	0,50	1	10