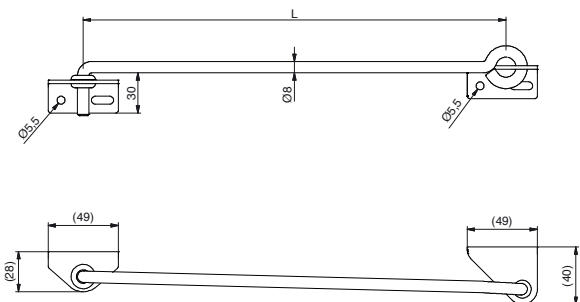
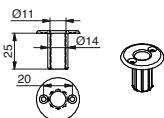


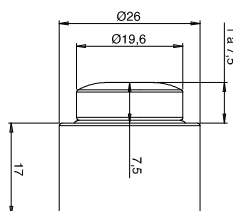
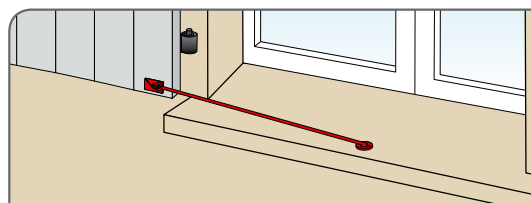
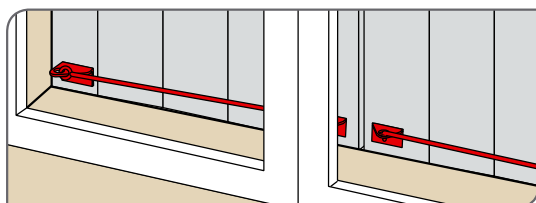
# FERMO A BRACCIO



## 7705.. Fermo a braccio

| Cod.    | Colori | L   | Mano | Icona |
|---------|--------|-----|------|-------|
| 7705306 | 9005   | 284 | Dx   | 20    |
| 7705316 | 9005   | 284 | Sx   | 20    |
| 7705406 | 9005   | 384 | Dx   | 20    |
| 7705416 | 9005   | 384 | Sx   | 20    |

- + - Puntale D.8 mm
- Piastrina per posizione di riposo
- Passafilo in gomma
- Finitura Cataforesi + Ral 9005
- Pozzetto in nylon



## 94PAE1.. Battuta nylon ammortizzata

| Cod.    | Colori | Icona |
|---------|--------|-------|
| 94PAE16 | ■      | 20    |
| 94PAE1C | TRASP  | 20    |